

| Regulations | Project |
|------------------------|----------------------|
| Plot area | 3,500 m ² |
| Building allowance 20% | 700 m ² |
| Footprint 25% | 875 m ² |
| <hr/> | |
| Bedroom level | 265 m ² |
| Entrance level | 430 m ² |
| <hr/> | |
| Leisure level: | |
| Living area | 385 m ² |
| Garage | 170 m ² |
| Staff + Laundry | 65 m ² |
| Technical + Storage | 125 m ² |
| <hr/> | |
| Total closed area | 1,440 m ² |
| <hr/> | |
| Porches | 290 m ² |
| Terraces | 65 m ² |
| Courtyards | 35 m ² |
| Carport | 65 m ² |
| <hr/> | |
| Outdoor pool | 175 m ² |
| Pool terrace | 120 m ² |
| Pool pavilion | 60 m ² |
| Indoor pool | 30 m ² |

Osa Menor Street

car entrance +78,00m

scale 1/200

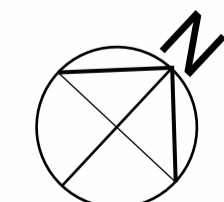
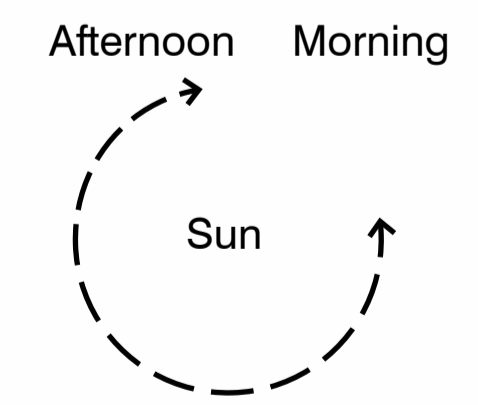
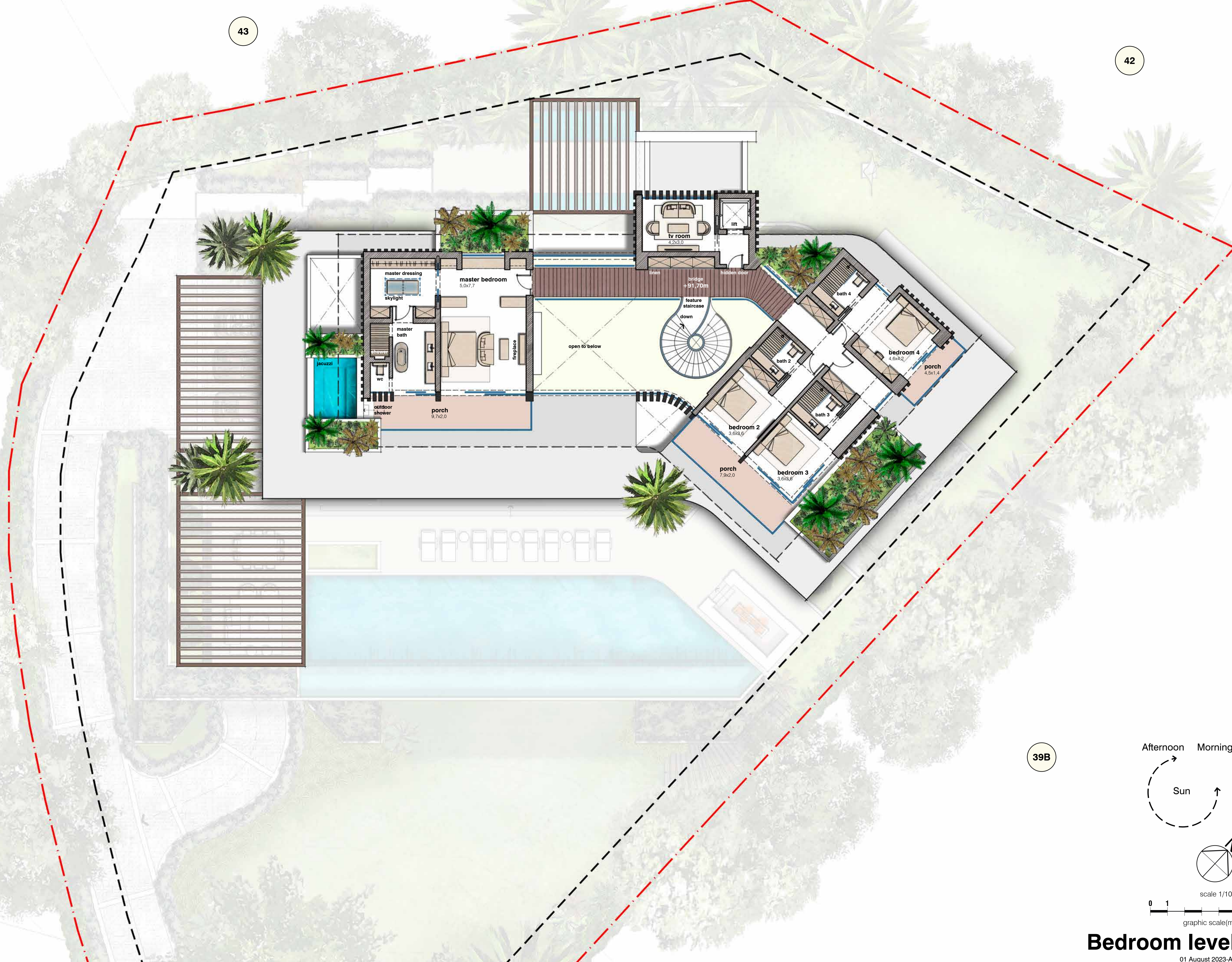
0 2 10

graphic scale(m)

Layout

01 August 2023-A2

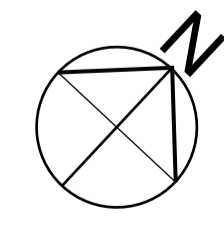
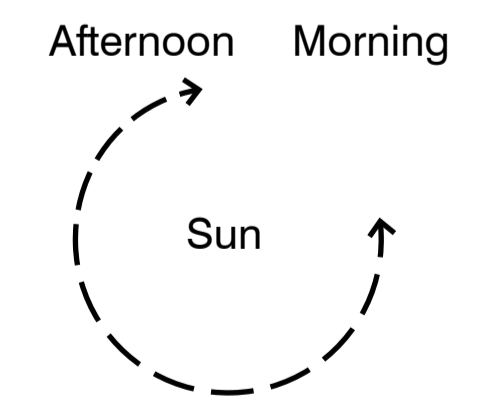
- double height
- staff/technical area
- refurbishment



scale 1/100
0 1 5
graphic scale(m)

Bedroom level

- technical room projection
- double height
- staff/technical area
- refurbishment



scale 1/100
 0 1 5
 graphic scale(m)

Leisure level