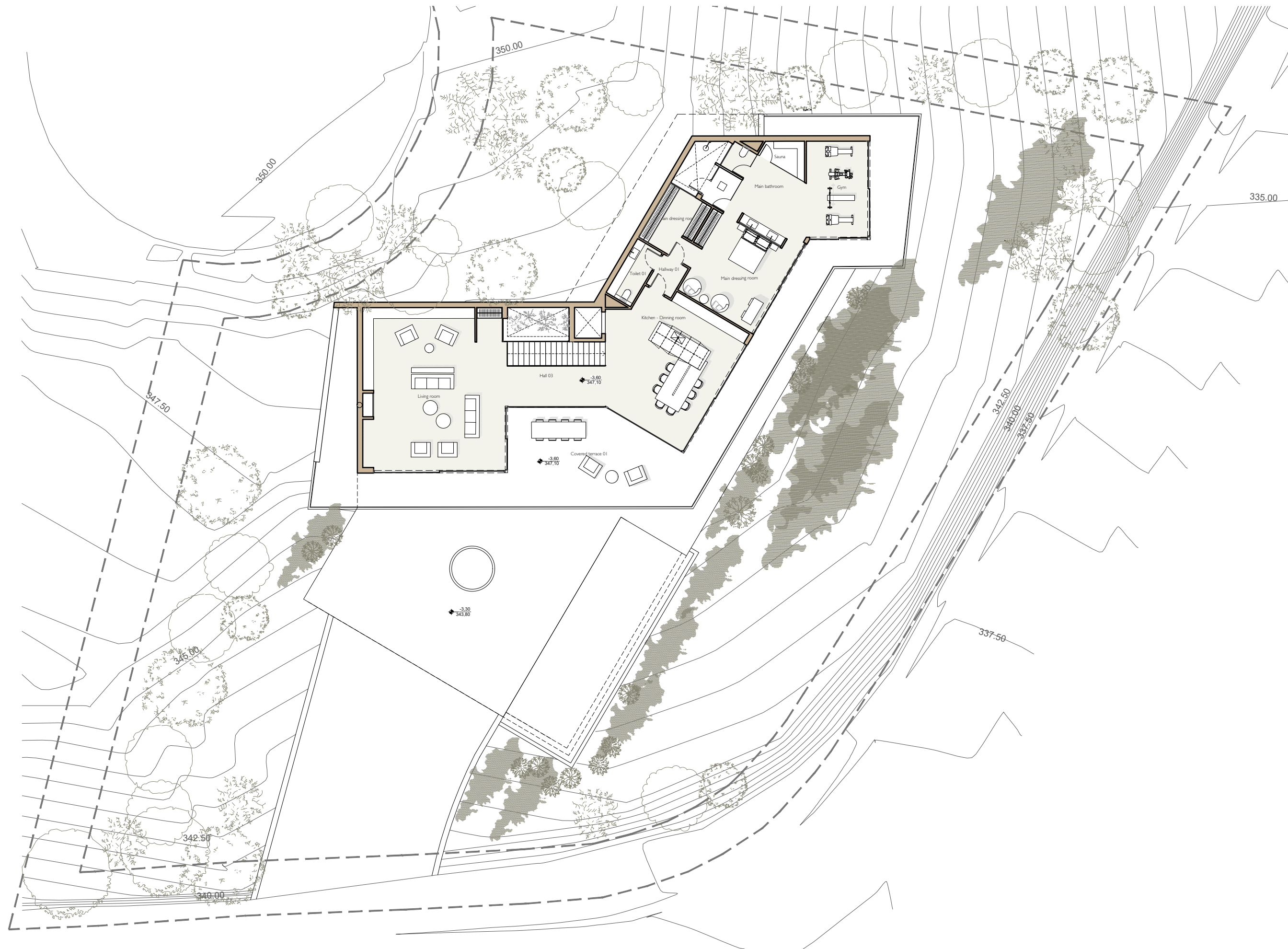




Floor plans, areas and room dimensions are indicative only and subject to change, construction variances and tolerances. In line with our policy of continuous improvement we reserve the right to alter the layout, building style landscaping and specifications at any time without notice.

VILLA 12
MONTE MAYOR, BENAHAVIS
PLOT PLAN





Floor plans, areas and room dimensions are indicative only and subject to change, construction variances and tolerances. In line with our policy of continuous improvement we reserve the right to alter the layout, building style landscaping and specifications at any time without notice.

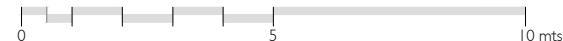


VILLA 12
MONTE MAYOR, BENAHAVIS
FIRST FLOOR





Floor plans, areas and room dimensions are indicative only and subject to change, construction variances and tolerances. In line with our policy of continuous improvement we reserve the right to alter the layout, building style landscaping and specifications at any time without notice.



VILLA 12
MONTE MAYOR, BENAHAVIS
MAIN FLOOR



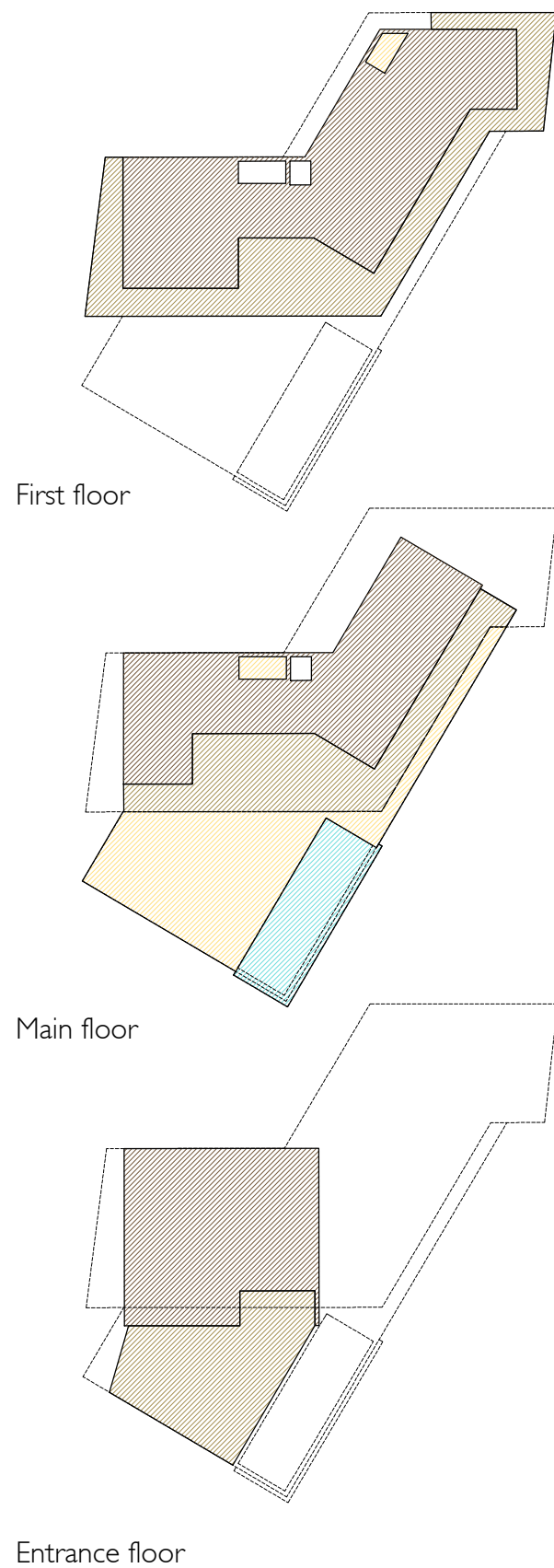






Floor plans, areas and room dimensions are indicative only and subject to change, construction variances and tolerances. In line with our policy of continuous improvement we reserve the right to alter the layout, building style landscaping and specifications at any time without notice.



VILLA 12
MONTE MAYOR, BENAHAVIS
ENTRANCE FLOOR





 FLOOR SURFACE: HOUSE	
First floor	248,21 m ²
Main floor	192,48 m ²
Entrance floor	164,46 m ²
TOTAL	605,15m ²
 FLOOR SURFACE: COVERED TERRACES	
First floor	149,57 m ²
Main floor	112,70 m ²
Entrance floor	105,45 m ²
TOTAL	367,72 m ²
 FLOOR SURFACE: UNCOVERED TERRACES	
First floor	4,51 m ²
Main floor	150,35 m ²
Entrance floor	0,00 m ²
TOTAL	154,86 m ²
 POOL SURFACE	
Lower floor	58,96 m ²
TOTAL	58,96 m ²
TOTAL FLOOR SURFACE	1.186,69 m ²
TOTAL PLOT SIZE	2.210,00 m ²

Floor plans, areas and room dimensions are indicative only and subject to change, construction variances and tolerances. In line with our policy of continuous improvement we reserve the right to alter the layout, building style landscaping and specifications at any time without notice.